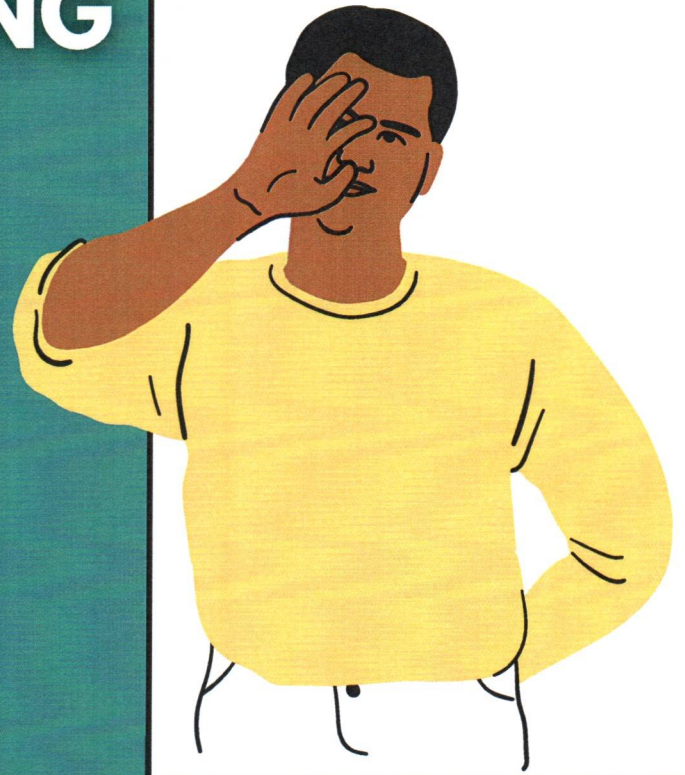
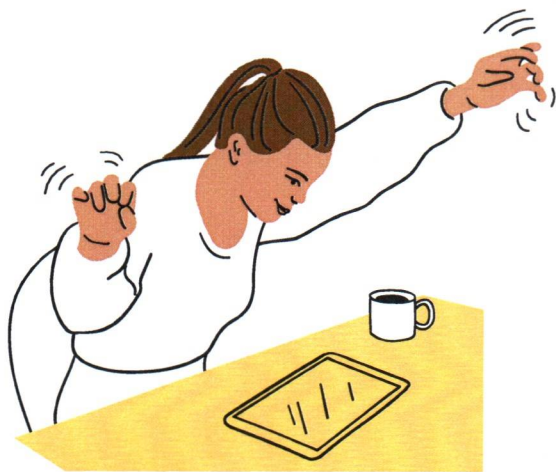


# UNDERSTANDING AUTISM SPECTRUM DISORDER (ASD)



**Everyone's brain works differently-  
Autism is a unique way of  
thinking, learning, and feeling.**

**You do not have to be the same  
to be kind and connected.**



## PEOPLE WITH AUTISM MIGHT:

- Communicate in different ways-  
like using few words  
or gestures
- Prefer routines and quiet  
spaces
- Get really focused on  
something they love
- Be sensitive to lights,  
sounds, or touch



FDLRS PAEC 753 West Boulevard,  
Chipley, FL. 32428  
(850) 638-6131, [PAEC.FDLRS.org](http://PAEC.FDLRS.org)



**Florida Diagnostic & Learning**  
— RESOURCES SYSTEM —