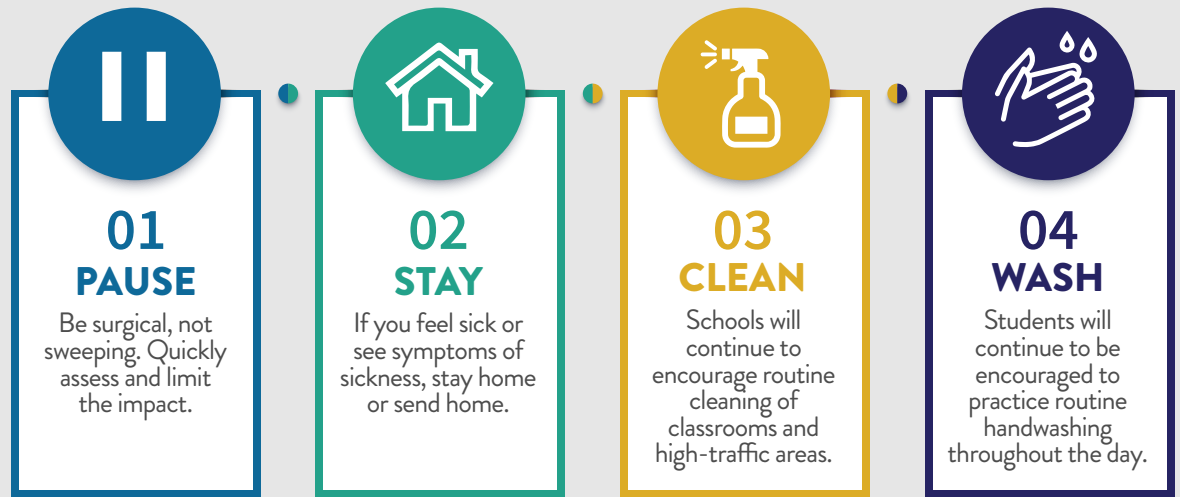
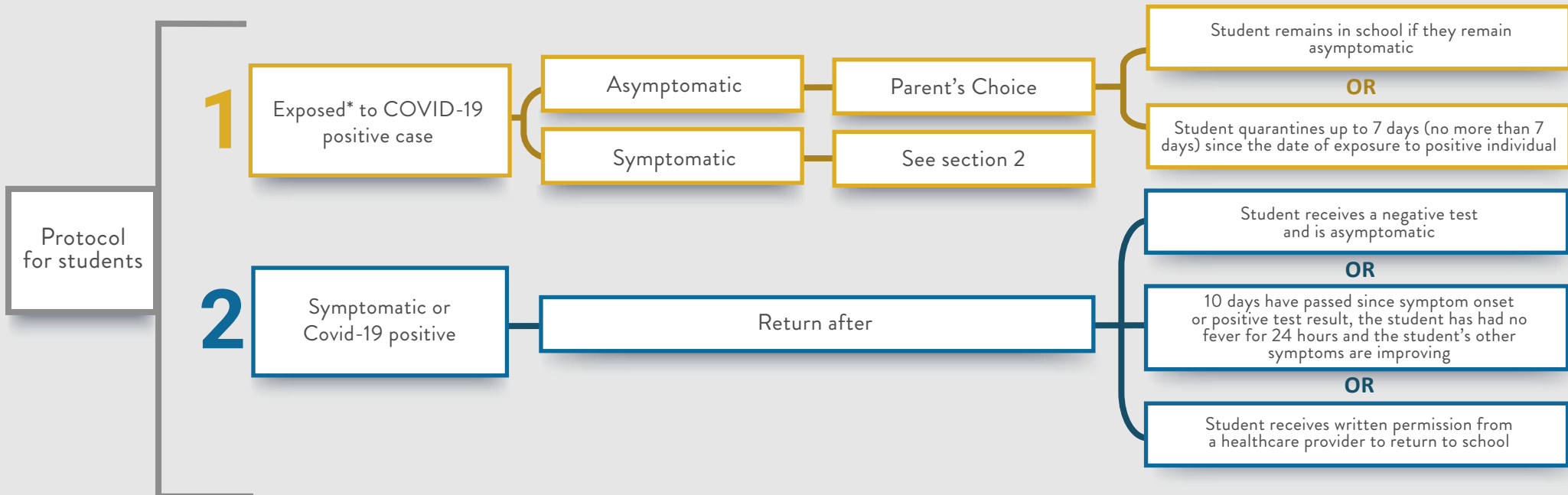


# 2021-22 SCHOOL YEAR

## PROTOCOLS FOR CONTROLLING COVID-19



### COVID-19 SYMPTOMATIC DECISION TREE



\*Per CDC, exposure is close contact of 6 feet or less for 15 minutes or more. Contact at greater than 6 feet or for less than 15 minutes is generally not sufficient to transmit the virus.

Updated: September 22, 2021