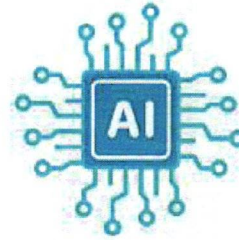




Assistive Tech Quarterly



AI 101

January 2026

ISSUE #03

What is AI?

Artificial Intelligence, also known as AI, is a hot topic in education today. There are numerous concerns associated with this technology, and rightfully so. Will AI damage students' ability to think critically and problem-solve, stifle creativity, and reduce human interaction? Will teachers be replaced? While these concerns are valid, the fact is that AI is not going anywhere. In fact, it has been around for longer than you think.

AI Undercover



- Autocorrect/Autocomplete in email
- Netflix & Amazon recommendations
- Social Media Feeds
- Smart Watches/Smart Home Devices
- Siri
- Adaptive Learning Paths

AI for Student Learning

Notebook LM: A Study Tool that will create a podcast from your notes

Suno: a study tool that will create a song in any style about any topic

Khan Academy: Study help, solves math problems, and explains concepts

Grammarly: Helps with Writing

Quizlet: Personalized test prep



Be sure to check your specific district's AI policies and approved AI platforms.



to FDLRS!
AI Professional Learning
Opportunities
for teachers and parents!

Upcoming Events

Virtual Learning Opportunities!

AAC-Band 2

or

Literacy for students
on Access Points

Sign up January 19th -30th

20-hour in-service credits!

[https://www.tlc-mtss.com/
passport](https://www.tlc-mtss.com/passport)

In-Person Learning Opportunities!

Digital Accessibility:
Supporting Students
with Disabilities

3 dates to choose from:

January 21st

February 18th

March 11th

Sign Up Today on ePDC!

Yes, there are many downsides to AI, but its positives are undeniable. And whether or not teachers embrace AI, students are using it. Therefore, it is in our best interest to understand AI so that we can effectively teach students when and how to use it to support learning, while also avoiding the potential pitfalls associated with it. Who knows, along the way, you might just discover how many ways AI can help support you in the classroom as well.

Need help with lesson plans, grading, and differentiated instruction ideas?

Try these:

[MagicSchool Ai](#)
[ChatGPT for Educators](#)

Regional Local Assistive Technology Specialist

FDLRS PAEC
RLATS
Emily Burge

751 West Blvd.
Chipley, FL 32428

<https://paec.fdlrs.org/>

*To request RLATS services, please
contact your ESE director or LATS
for referral.*



Assistive Tech Quarterly

October

ISSUE #02

AAC Awareness Month



Tips for Getting Started in Your Classroom

October is AAC awareness month. AAC stands for augmentative and alternative communication. AAC is communicating through the use of sign language, picture symbols/boards, or using a device such as an iPad. Just because someone is nonverbal or has limited verbal ability doesn't mean they don't have something to say.

Remember...everyone deserves a voice!

1. Start small: Don't overwhelm you or your student. Pick a few core words to use during activities that occur often every day, like put or go.
2. Model, model, and model some more. Incorporate the use of AAC throughout the day-lessons, mealtimes, play time, etc..
3. Have Patience: Progress won't happen overnight. Think about how much exposure a baby gets to the spoken language before they start to babble. Having an AAC device modeled in speech for a few minutes each week is not going to be very effective. Building understanding of language and communication takes a lot of time and exposure.

Need help planning AAC activities?

These helpful sites have ideas, including pre-made core word lessons to get you started.

<https://praacticalaac.org/>

<https://aaclanguagelab.com/>

<https://coreword.assistiveware.com>

What are the benefits of using AAC?



Supports natural speech development and language learning



Increased independence



Decreased frustration and behaviors



Improved educational and social outcomes



Easily customized and personalized



More communication!



Upcoming Events

Virtual Learning Opportunities!

Digital Choice Boards
Oct. 28th or Dec. 4

iPad Accessibility & Apps
Nov. 4 or Dec. 15

Engaging All Learners
Part 1
November 10th

Engaging All Learners
Part 2
November 18th

In-Person Learning Opportunities!

Enhancing Learner Outcomes:
The Role of Visual Supports
11/06/25

Sign Up Today on ePDC!

Types of AAC

Unaided AAC

Does not require any external equipment or tools.

Aided AAC

Requires the use of equipment or tools in addition to the person's body.

Includes gestures, signs, Makaton, facial expressions, body language, vocalisations.

Low-tech AAC

Includes pictures, photos, objects, drawings, written words.

High-tech AAC

Includes iPad apps, computers, speech-generating devices.



Regional Local Assistive Technology Specialist

FDLRS PAEC
RLATS
Emily Burge

751 West Blvd.
Chipley, FL 32428

<https://paec.fdlrs.org/>

To request RLATS services, please contact your ESE director or LATS for referral.



Assistive Tech Quarterly

SEP 2025

ISSUE #01

BACK TO SCHOOL

AT & the IEP

Assistive technology is any item, device, or tool used by a person with a disability that enables them to do things they might otherwise not be able to do because of their disability.

All IEP teams are required to annually consider whether a student with a disability needs AT to access their education.

**What is consideration of AT?
Who evaluates the student?**

Consideration can start with just the teacher and student- using the SETT framework, trialing a tool, and taking data. It may include several members of the IEP team.

If the team decides that further assessment for AT is needed beyond consideration, typically for students with complex disabilities, an evaluation may be recommended.*

*Please refer to district policies and guidelines for formal evaluation timelines and procedures.

Use the SETT Framework to guide the process!

SETT & More | Joy Zabala Site



S

**Who is the
STUDENT?**

- Strengths
- Needs

E

**What is the
Learning
ENVIRONMENT?**

- Room Layout
- Barriers
- Supports In Place

T

**What are the
TASKS for
learning?**

- Learning Goals
- Essential Skills
- Barriers

T

**What TOOLS are
currently being
used
or need to
be considered?**

Upcoming Events

Virtual Learning Opportunities!

**ESE 101: Understand in²g
Supports and Services**
09/2/25

**Using Google Tools to
Support Struggling Learners**
09/3/25

*Choose a day & time that
fits your schedule!*

2:00-3:00 CST
or
3:15-4:15 CST

In-Person Opportunities

**Accommodations: Assisting
Students with Disabilities**
09/09/25
8:00-3:00 CST

**Executive Functioning:
Supporting Students for
Lifelong Learning**
09/25/25
8:00 - 3:00 CST

Sign Up Today on ePDC!



For people without
disabilities, technology
makes things easier. For
people with disabilities,
technology makes things
possible.

ibm training manual 1991

Regional Local Assistive Technology Specialist

FDLRS PAEC
RLATS
Emily Burge

751 West Blvd.
Chipley, FL 32428

<https://paec.fdlrs.org/>

*To request RLATS services, please
contact your ESE director or LATS for
referral.*